



Puzzle
Kichevo, Macedonia

Team leader
Sanja Avramoska, Macedonia

Team members
Irena Damjanoska, Macedonia
Adelina Fejza, Macedonia
Valbona Fejza, Macedonia

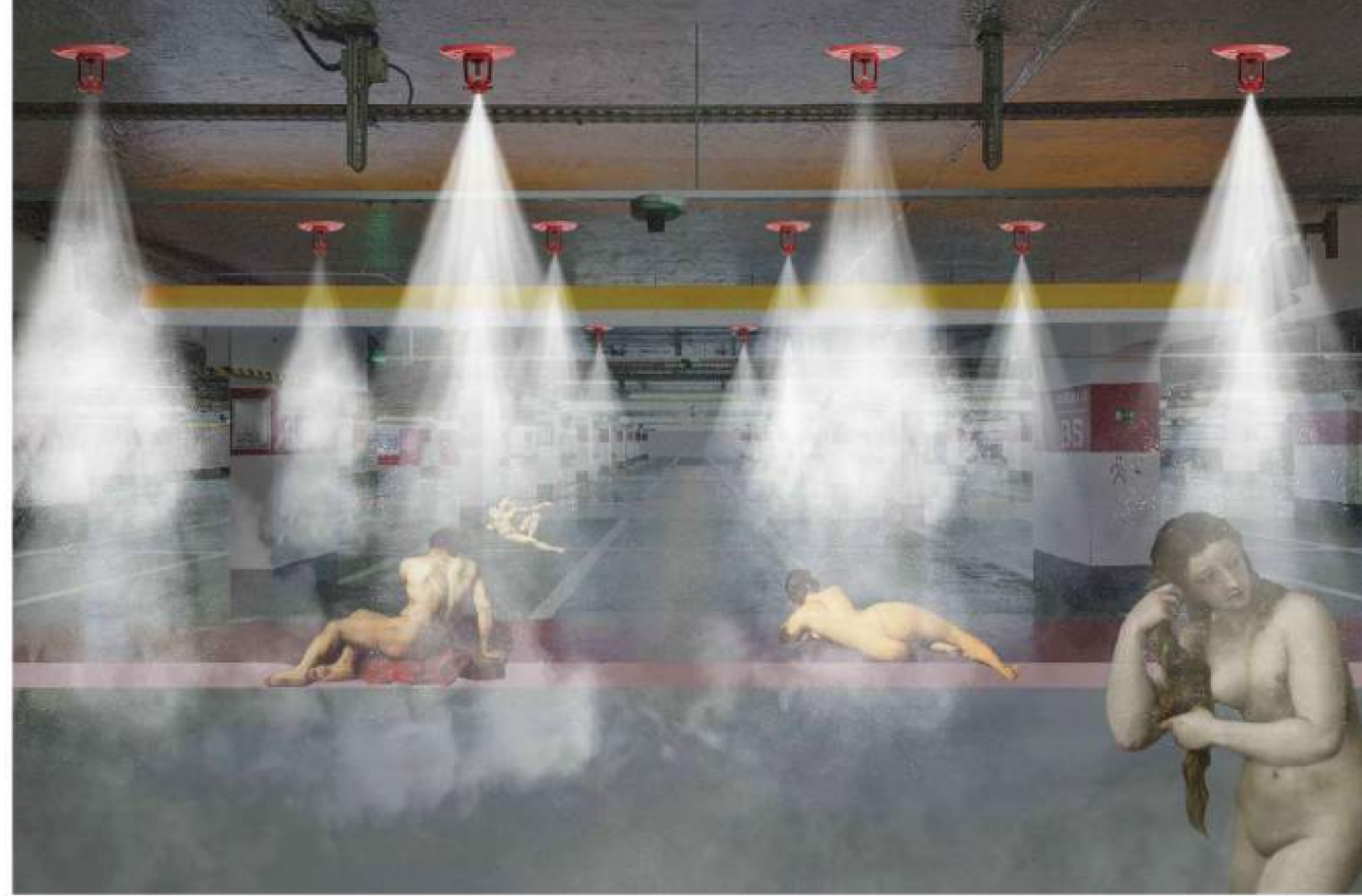
PURGATORIO

PURGATORIO

Hemisphere of Water

The passengers pass through Euralille until they arrive at their final destination. This is a waiting place, a connector, a gate, a passage, a place to prepare for the rest of the journey. The underground parking lot becomes a purgatory, a bath, a temporary place for cleansing, purification, self-reflection, nihilism, satisfaction, and indulgence. Light penetrates through a few sections in the slabs - a chance to take a glimpse of heaven on earth. The lower you go to the underground, there is a possibility to indulge in different ways of behavior. It is a place where the incontinent visitors can indulge in bodily lustiness. While the parking lot is deprived of daylight, the new programs that occupy the parking lot do not need light, and the low ceiling offers a perfect feeling of privacy. The baths are warmed by the geothermal energy and the existing fire protection installations are used to provide the water for spa facilities, while the current ventilation offers conditions for kitchens of the hungry souls. The space is left flexible to transform back to the parking lot when needed.

sprinkler rainfall

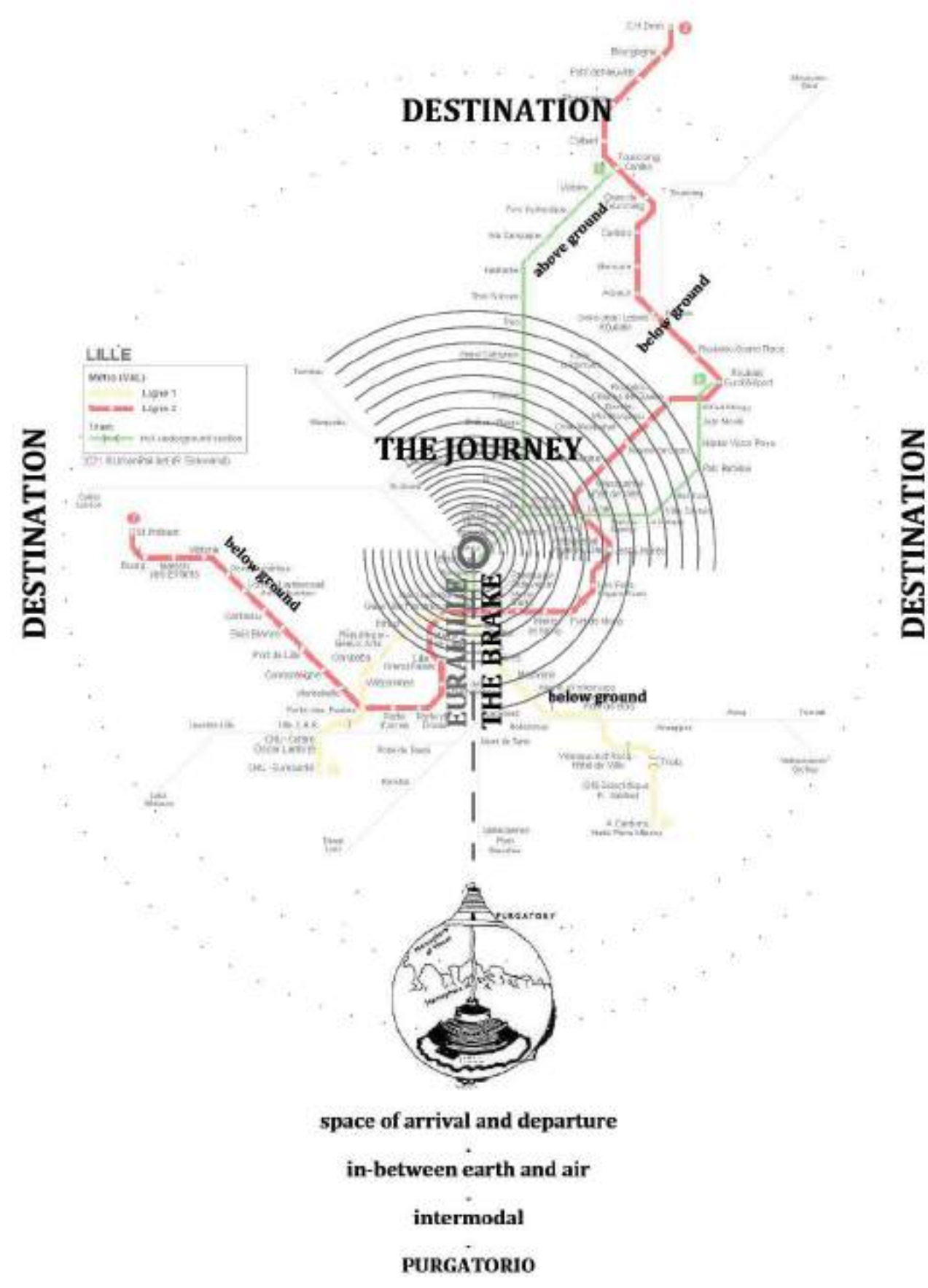


arrivals cleanse and refresh their bodies from the journey

self-reflection



arrivals self-reflect and purify their soul, while getting a glimpse of paradise on earth



Hemisphere of Earth

infinite fume



arrivals embrace the warmth of the earth and get lost in the infinite fume, finding their way with help of the signs on the floor

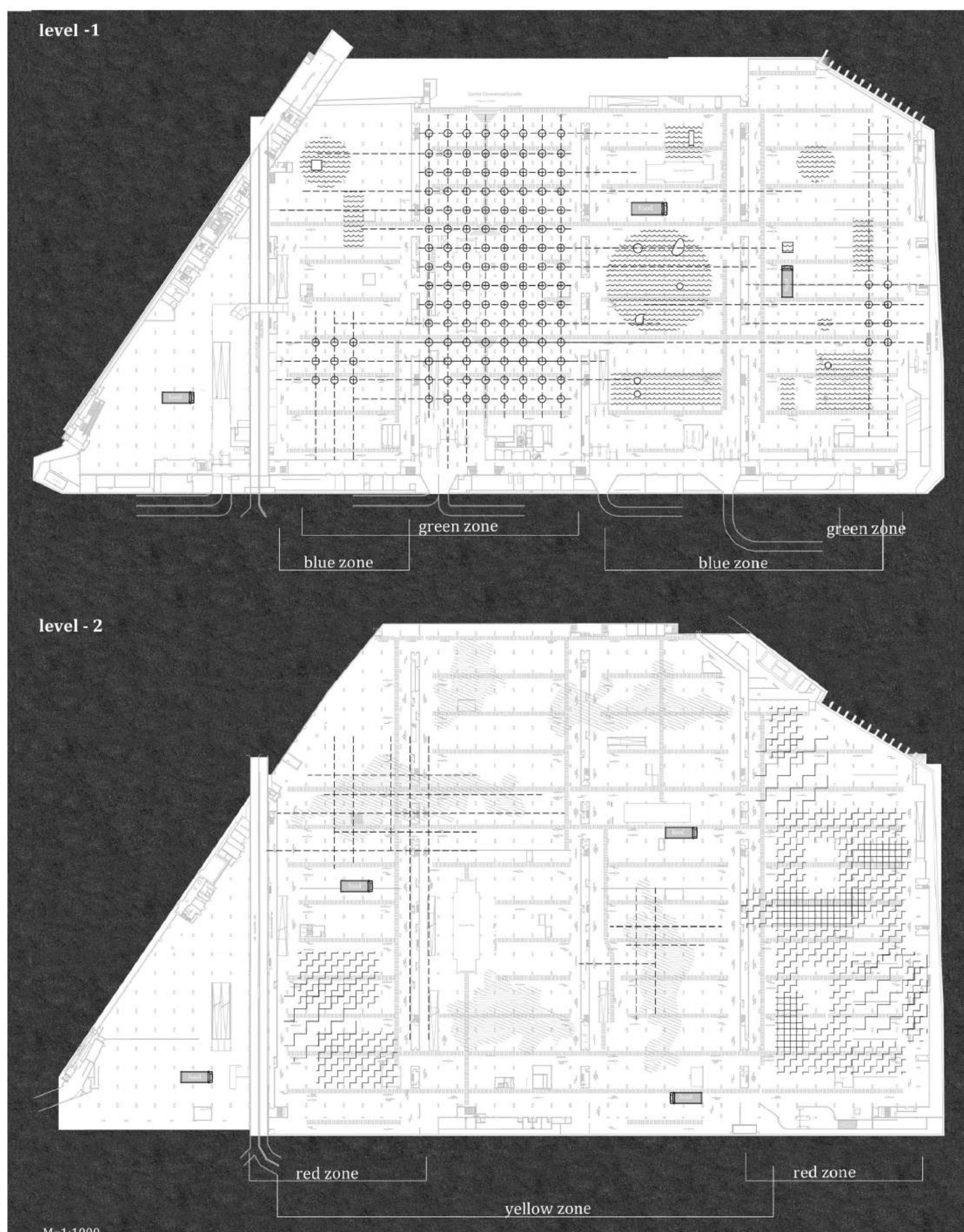
too much love in earthly heaven



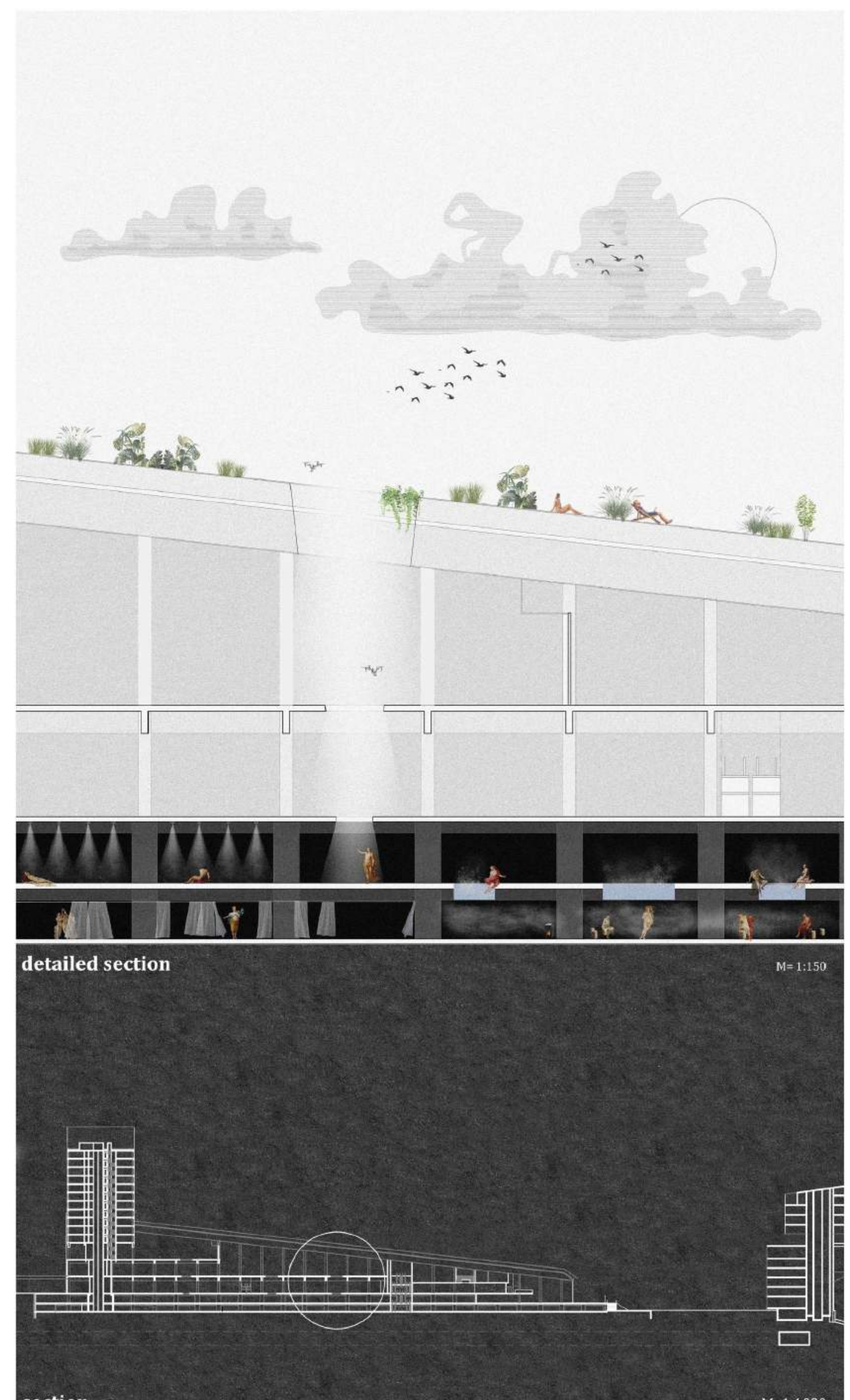
arrivals find shelter and privacy, they hide from the light and the gaze of the crowd

team: PUZZLE
reference: 2064c57f69

PURGATORIO



red zone | too much love in earthly heaven
yellow zone | infinite fume
green zone | sprinkler rainfall
blue zone | self-reflection



team: PUZZLE
reference: 2064c57f69