



ALBERTO RONCELLI & NICOLE VETTORE  
Copenhagen, Denmark

Team leader  
Alberto Roncelli, Denmark

Team members  
Nicole Vettore, Denmark

# EDEN : BEYOND EURAILLIE SURFACES

01 Alberto Roncelli & Nicole Vettore

## Eden Beyond Euralille Surfaces



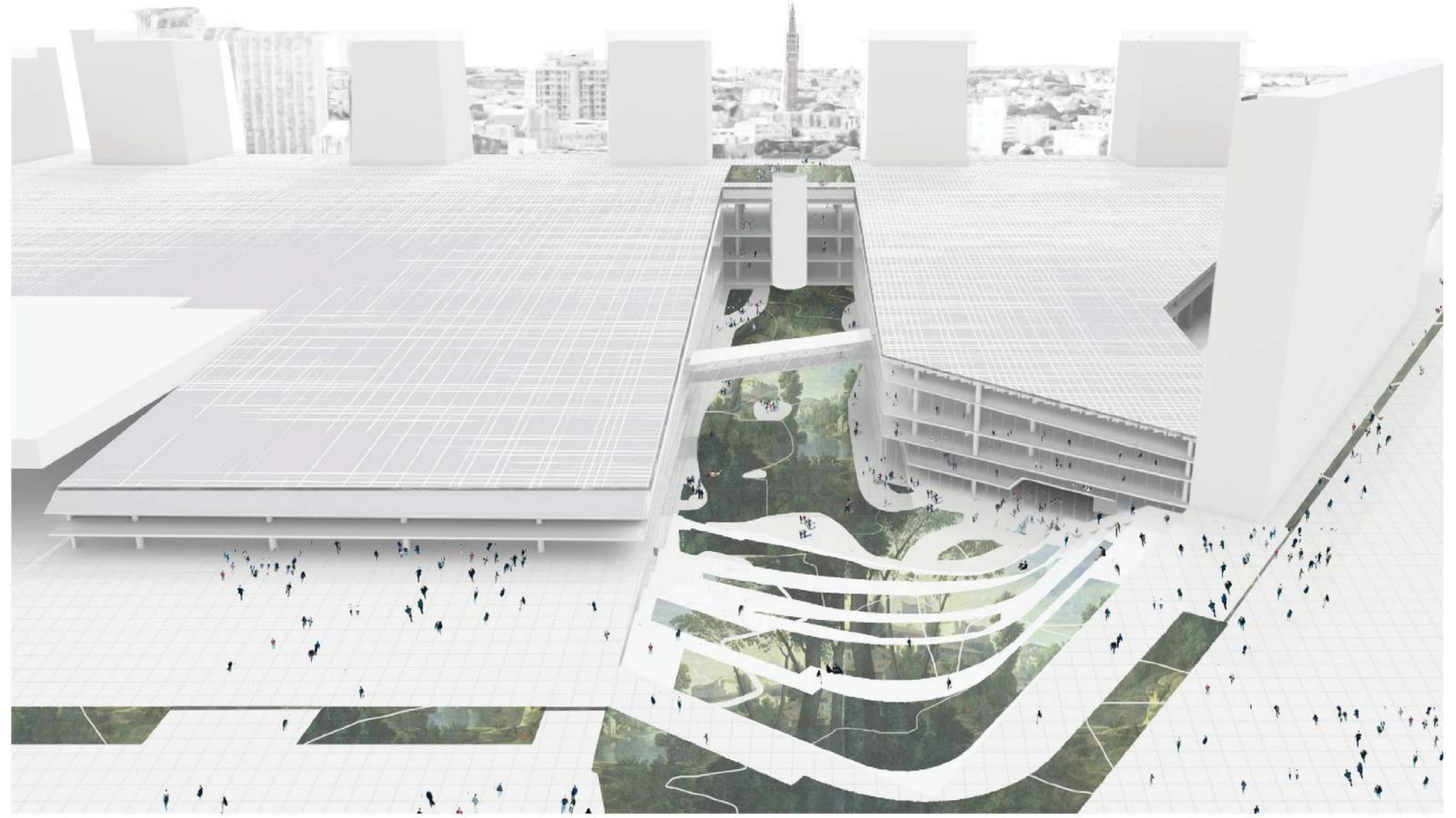
"Euralille reinforces its role as a connector by increasing the quality of its public space"

The project envisions Euralille as a fundamental place for Lille 21st century life, supporting the new needs for mobility, logistics, human cohesion and resilience. In this vision, the underground car park becomes a valuable spatial resource able to accommodate a wide variety of spatial settings.

The main gesture of the project is a 20 metres wide cut that opens up the building, reaches the two underground floors and creates the conditions for introducing natural air and daylight. The cut extends the urban life of Place François Mitterand inside Euralille offering more than 6000 sqm of public realm through a rich landscape with south-facing seating, spaces for gatherings, paths and pocket gardens. A strong visual connection is created with the Belfroi de Lille and a new rooftop overlooks the old city and is the culmination of the journey from the underground.

The former underground spaces positioned along the cut, are now bright double-height coworking spaces and retails. Secondary rooms transcend the scale of the building and use their groundspace uniqueness to become containers for creative activities, exhibitions and event. The rest of the carpark evolves its spaces to offer flexible layouts for new activities and needs, not only related to future mobility but also for deliveries, storage and potential no-human industries.

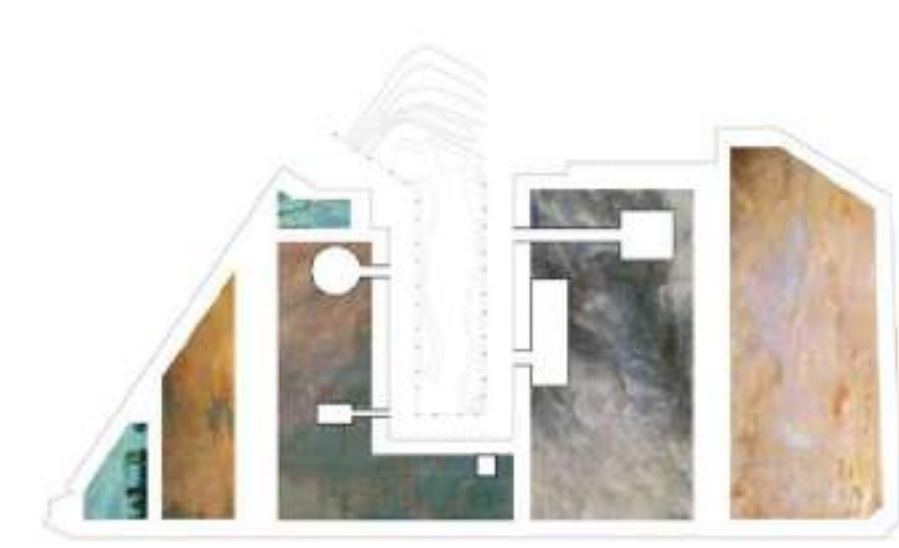
We imagine the future of the Euralille carpark not only as a place capable of supporting other activities, but primarily as a place able to promote them through an enriched centre for life.



**Landscape**  
Introducing public ground and landscape

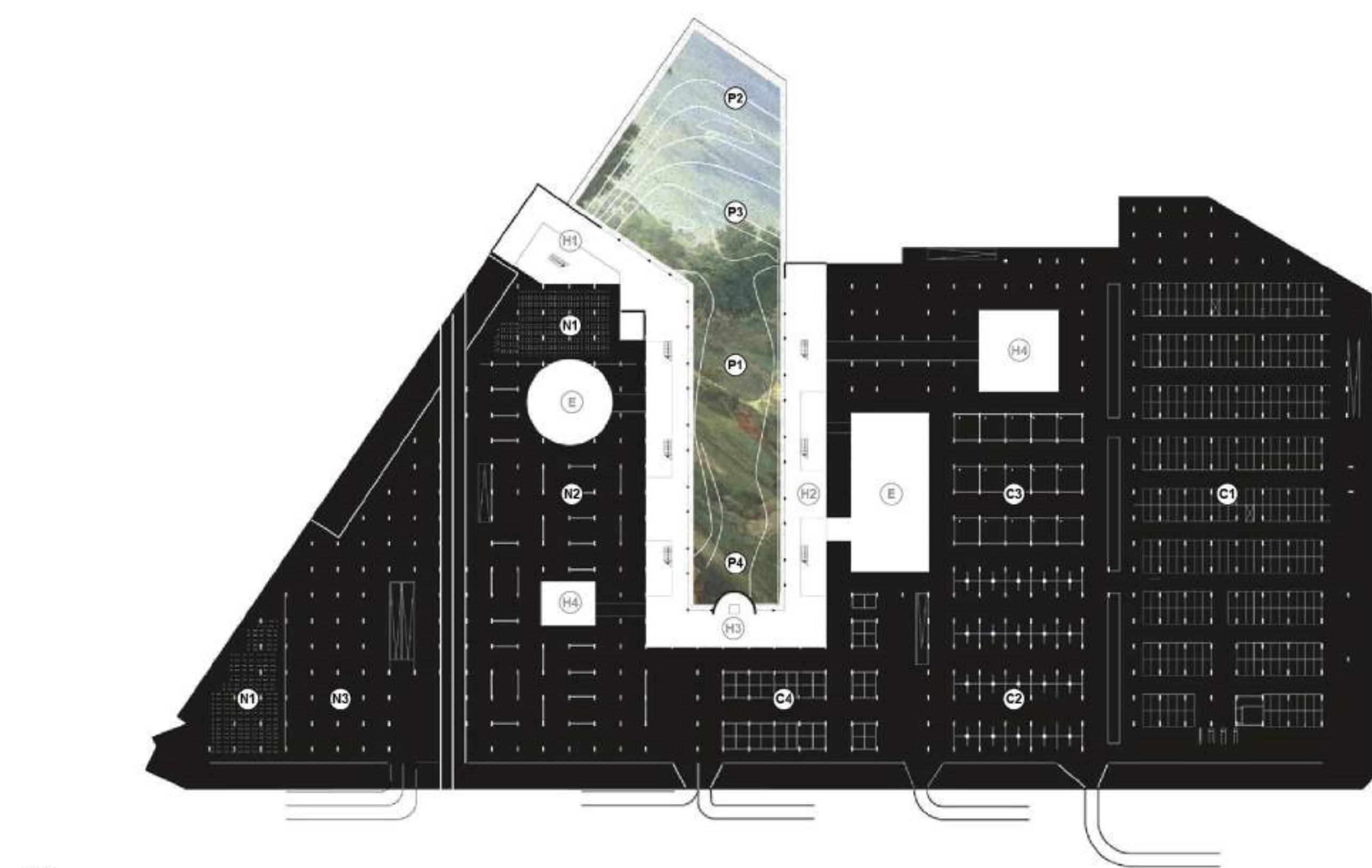


**Humans**  
Supporting human activities with spatial diversity



**No-Humans**  
Introducing new layout for new and future non-human programmes

02 Alberto Roncelli & Nicole Vettore



Plan.

- (C1) Standard parking
- (C2) Charging station
- (C3) Place for electric car checkup and charging
- (C4) Dedicated parking for car sharing

**Public spaces**

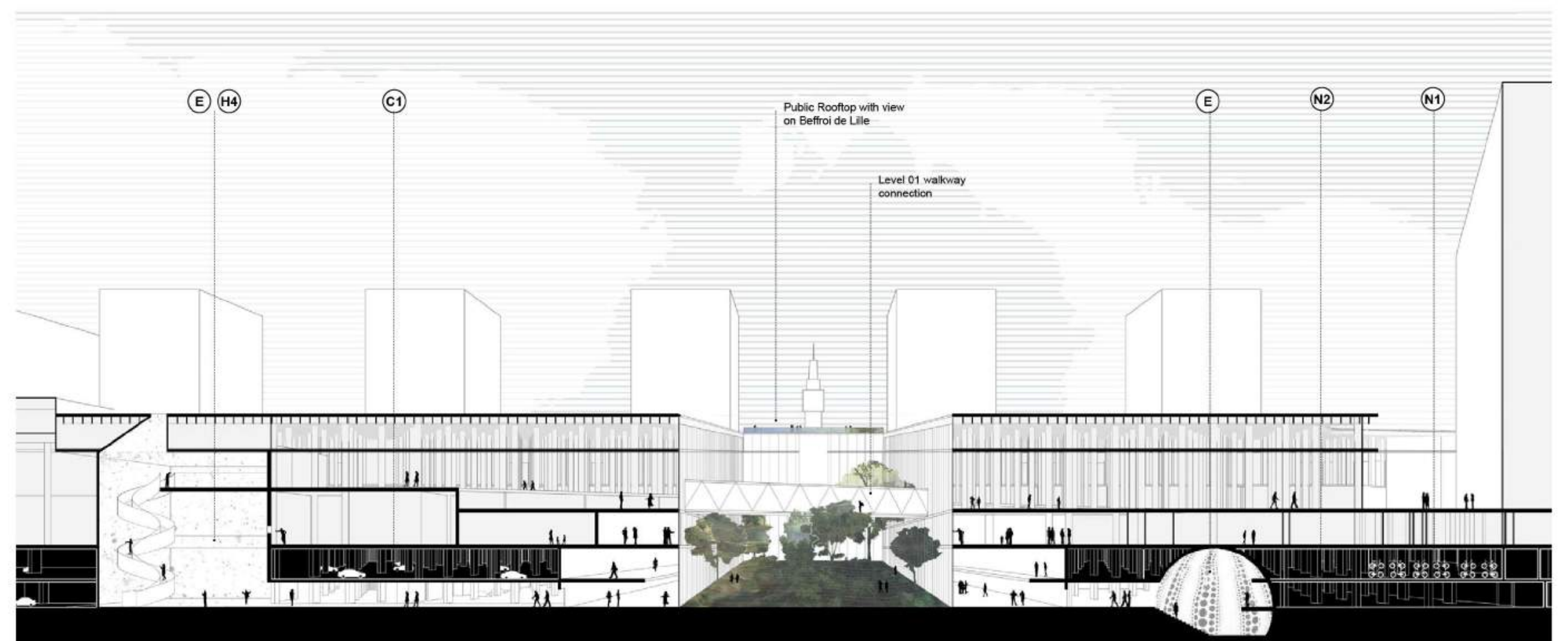
- (P1) Linear garden
- (P2) South-facing seatings and grandstands
- (P3) Plaza for gatherings and events
- (P4) Little hill and access for the rooftop public elevator

**Human places**

- (H1) Main entrance with lobby and cafe
- (H2) Perimetral double height space with mezzanines (coworking, opens spaces, library)
- (H3) Elevator for the public rooftop
- (H4) Connectors - places to move vertically via all the building levels
- (E) Extraordinary places - spaces using their underground uniqueness. For events, big exhibitions, experiences.

**Non-human spaces**

- (N1) Bike and soft mobility parking
- (N2) Storage for pick-up and deliveries
- (N3) Potential place for robot and drone maintenance



Section.