

**LOCAL**  
Paris, France

Team leader  
Benoist Desfonds, France

Team members  
Jerome Picard, Norway  
Matthieu Boustany, France

# CARESTATION

## CARESTATION

### UN-USED PARKING, A NEW PLACE FOR CARE ?

Carestation starts with three simple observations:

- 1/2 of the European population will be above 65y old by 2060, mostly living in cities (1)
- In 2022, 25,000 caregivers would need to be hired just to replace empty jobs in hospitals. (2)
- The French «medical desert» never ends expand. In 2016, nearly 3.8 million French lived in an area under-attended with general practitioners (i.e. 5.7% of the population), against 2.5 million (3.8% of the population) four years earlier. How can our city and its spaces inspire a new generation of Health workers, provide inclusive and accessible places for a safe and lively multi-generational living?

Far away from the hospital-machine outside city life, or the aggregated and unadapted institutionalised Healthcare centre, Carestation places the elements of Health at the heart of life in emergency with the multi-generational and complex context of Lille-Europe to reuse durably redundant parking spaces of the station and make use of the railway infrastructure in an unprecedented and innovative way.

Carestation aims to achieve 3 goals:

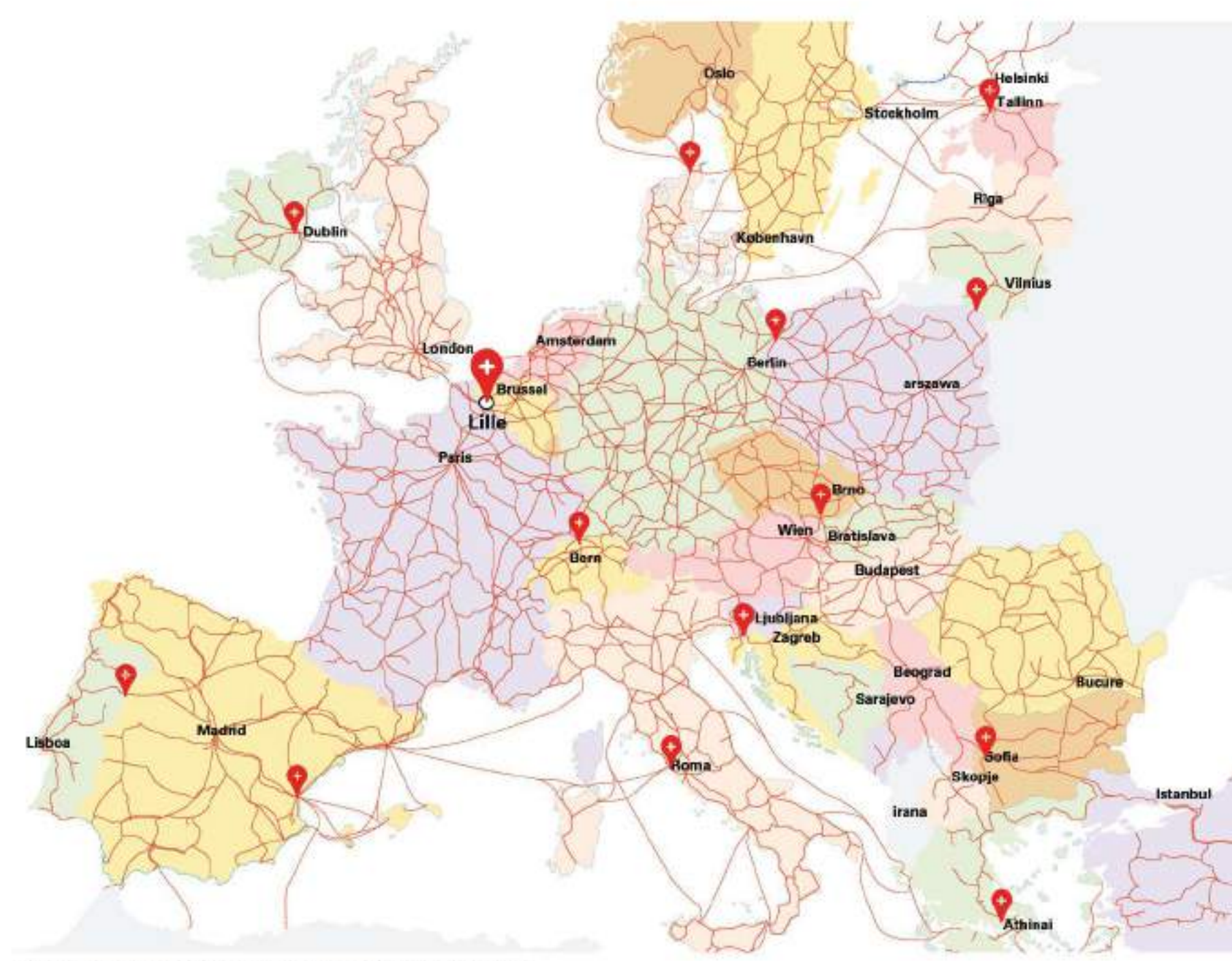
- 1- Transform spaces into attractive and innovative places of Health that evolves the idea of train-station
- 2- Disperse the services of Health to eradicate medical deserts in rural areas
- 3- Operate at European scale for logistics and exchange of skills

From pop-up for physiotherapy or gardens for yoga to autonomous logistic centre, Carestation bridges the gap between accessible and lively care centres to redefine train station beyond the function of travel or retail to become an inclusive place and an attractive working environment for all.

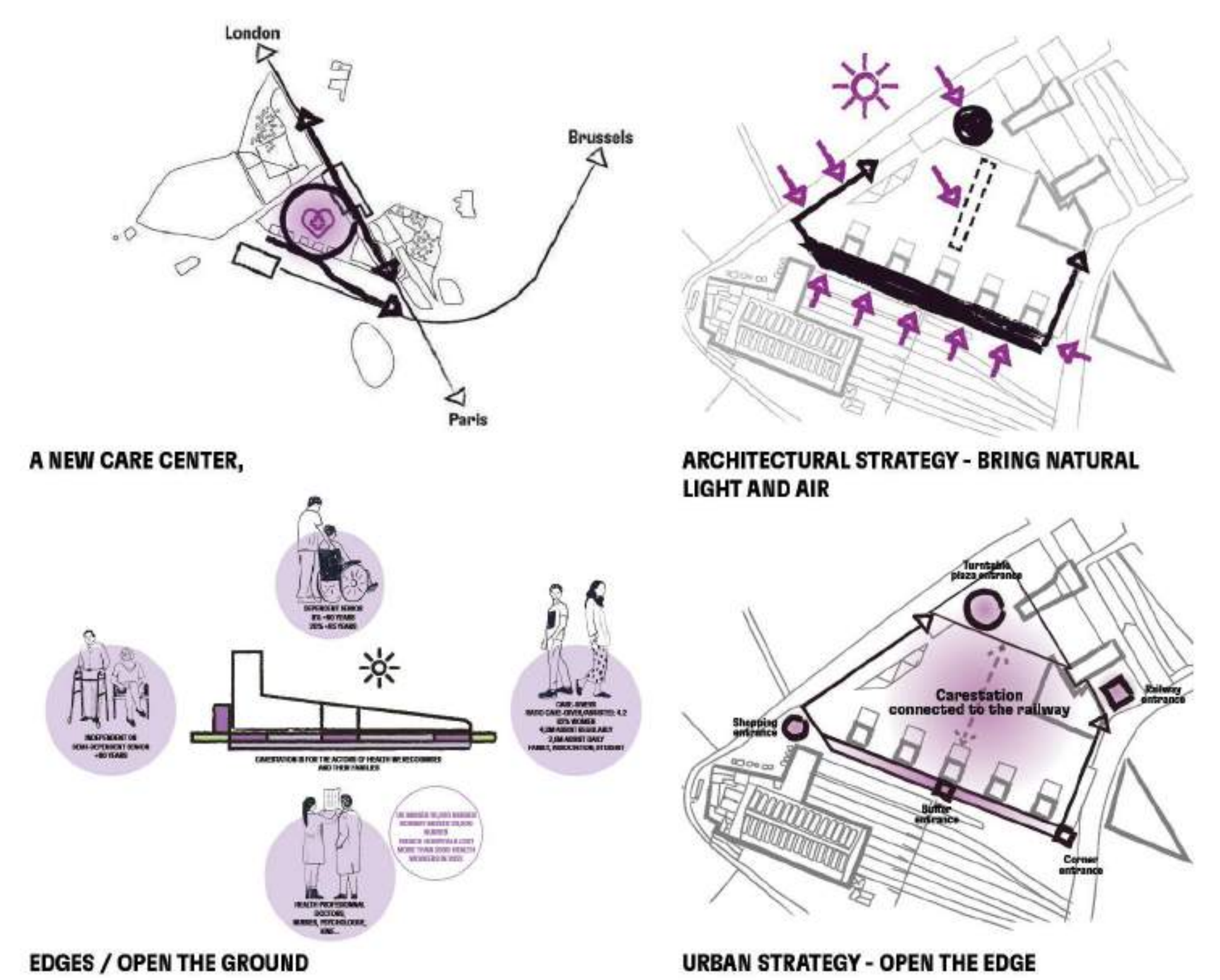
Carestation is also a dispersal strategy via an already established green mobility network to irrigate durably French medical desert of the North with delivery and day-visits from healthcare professional. Using Lille Carestation as a logistical base and the beating heart of this new form of integrated services, Carewagon stops in cities and smaller villages.

Carestation is a vector to share and manage stocks and skills at a European scale and a pilot for other metropolis and area in lack of medical services and social infrastructure.

1- Eurostat  
2- Why French Nurses Are Quitting In Record Numbers: <https://www.epj.com/home/2022/3/28/why-are-nurses-quitting-the-hospital>  
3- Le Monde, 14 février 2020 Françoise Béguin Près de 3,8 millions de Français vivent dans un désert médical



EUROPEAN RAILWAY AND NEW CARE CENTERS



TRAIN      AERODRONE      RELAXATION GARDEN AND WATER SPACE      HEALTH SERVICE      TRIDIMENSIONAL GLASS SKIN TO BRING LIGHT

TEAM : LOCAL

## CARESTATION

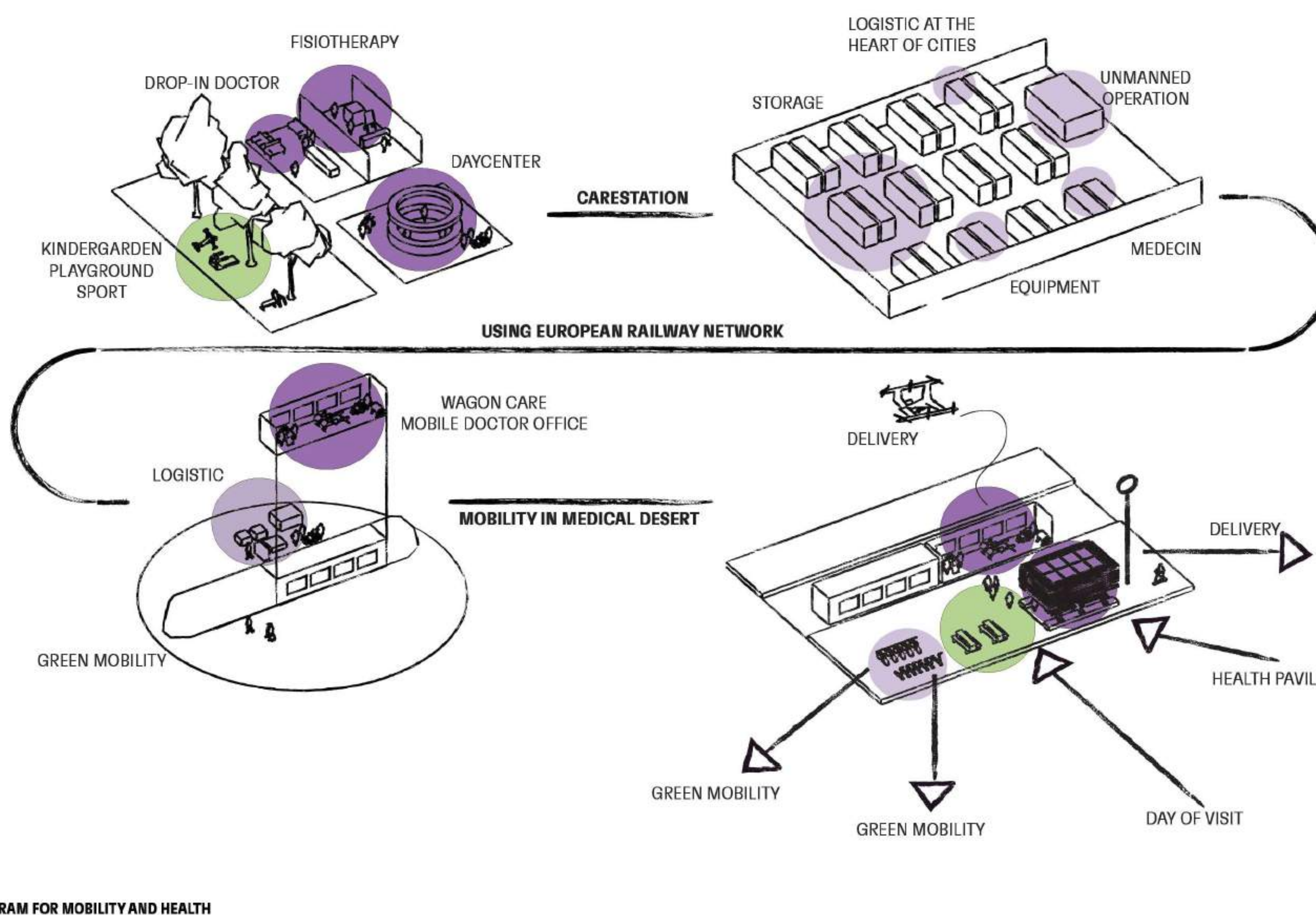


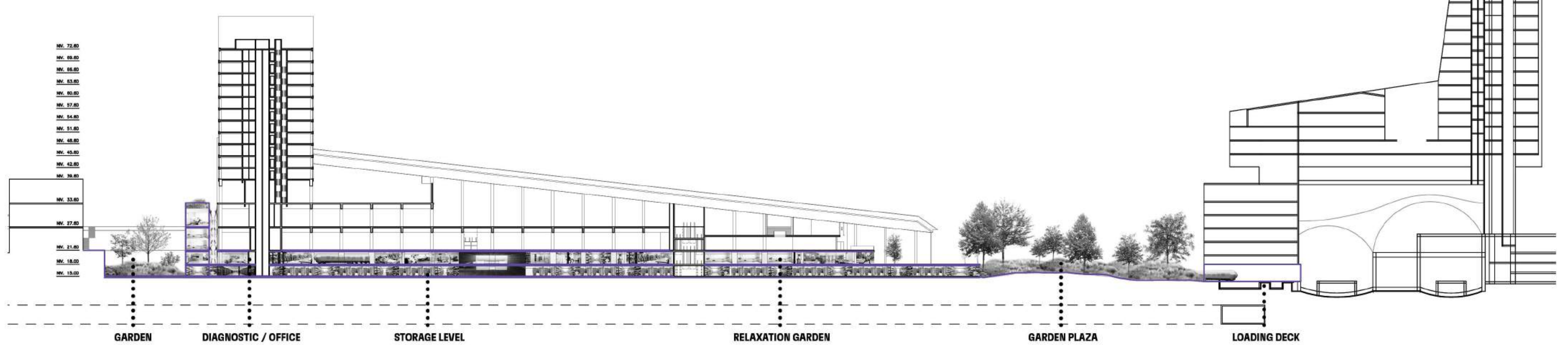
DIAGRAM FOR MOBILITY AND HEALTH



TURNTABLE PLAZA



PLAN



SECTION 1/500

TEAM : LOCAL